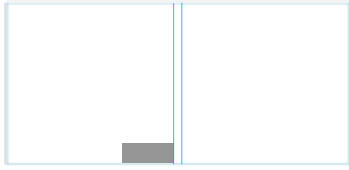


# ASUKA BOOK<sup>®</sup>

## **BLANK TEMPLATE TIPS** Understanding the Templates

# BLANK TEMPLATES



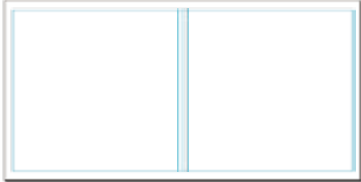
000000.psd



000001.jpg



002003.jpg



004005.jpg



006007.jpg



008009.jpg



001000.psd

Each template set contains the following:

000000.psd ... book cover  
000001.jpg ... starting right page  
002003.jpg ... pgs. 2 and 3 spread  
004005.jpg ... pgs. 4 and 5 spread  
etc...  
100000.psd ... last left page

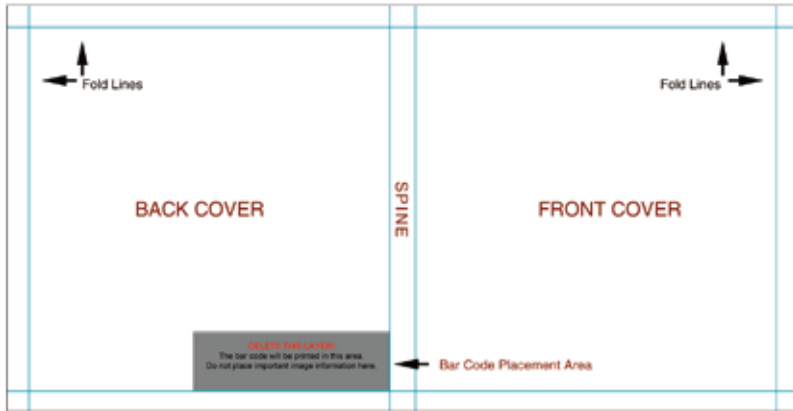
Please do not alter any of the file specifications already set for you in each of the template sets.

**DOCUMENT DIMENSION**  
**RESOLUTION**  
**COLOR SPACE**  
**GUIDE LINES**  
**FILE NAME**

If any changes are made, File Checker will generate an error message while attempting to create your pdf document.

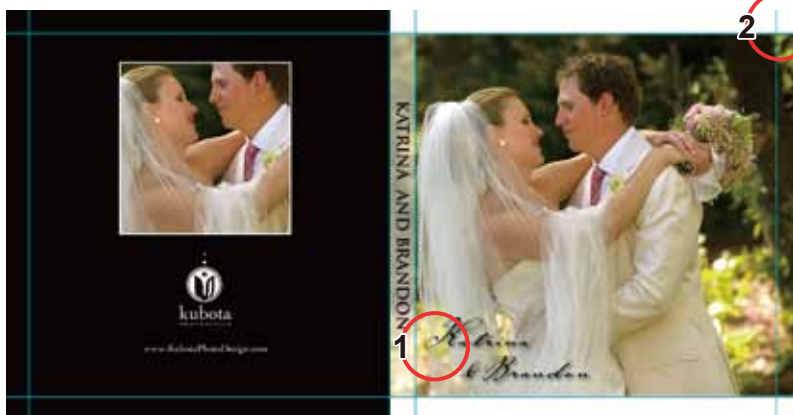
It is also extremely important that you **review your layout before sending your files** to print. AsukaBook will faithfully reproduce your design. For this reason, it is solely your responsibility to ensure that your order is free of typographical errors, graphical errors and/or poor image quality.

# BLANK TEMPLATE - COVER



## BLANK TEMPLATE - COVER

Resolution: 260 dpi  
 Fold Line: Varies  
 Spine: Varies  
 Barcode: Back Cover



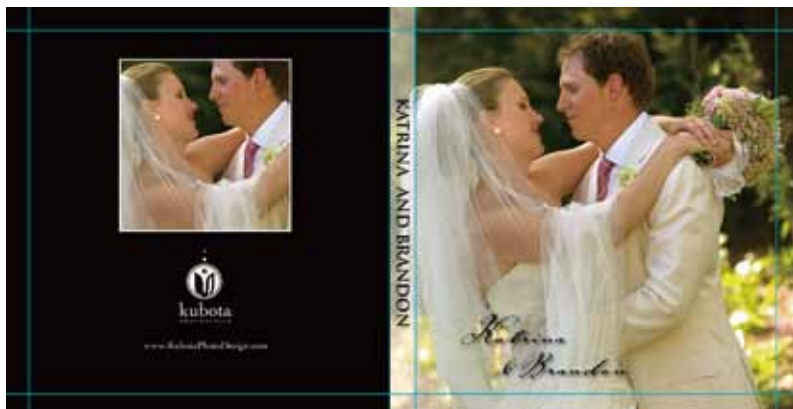
## INCORRECT PLACEMENT

- 1 Text is too close to spine.
- 2 Image edge stops at fold line.



## UNDESIREABLE RESULTS

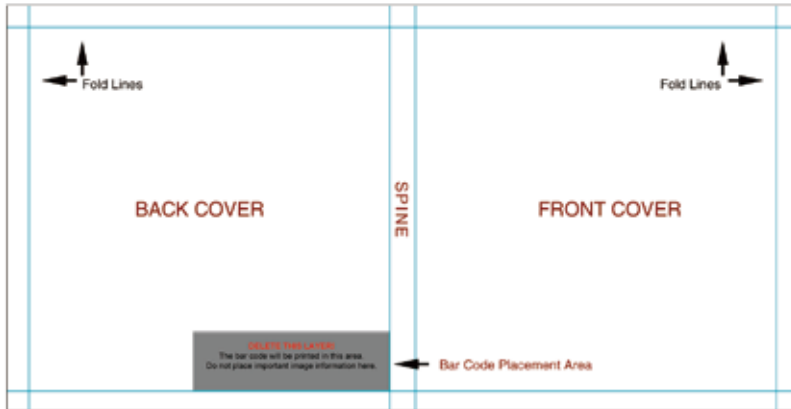
- 1 Text on front cover is within folding crease area.
- 2 Background color will show at edge of cover.



## CORRECT PLACEMENT

- 1 Place front/back cover text at least .50 in. away from spine area.
- 2 Image edge placed at the edge of the blank canvas or template (beyond fold line).

# BLANK TEMPLATE - COVER



## BLANK TEMPLATE - COVER

Resolution: 260 dpi  
Fold Line: Varies  
Spine: Varies  
Barcode: Back Cover



## INCORRECT PLACEMENT

- 1 Text is too large for spine area.
- 2 Logo/Image placed within barcode area. Barcode grey placement box not deleted.

1

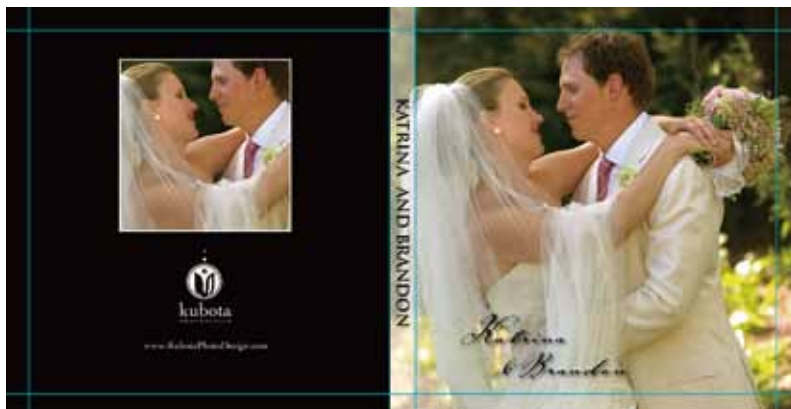
**TOO BIG !!**

2



## UNDESIREABLE RESULTS

- 1 Text is too large for spine area.
- 2 Logo/Image is covered by barcode.



## CORRECT PLACEMENT

- 1 Text size is smaller than spine area.
- 2 Place logo/image outside barcode area. Delete grey barcode placement box.

Last inside page also has a barcode placement area.

# BLANK TEMPLATE - COVER



## INCORRECT

- 1 Cover file 000000.jpg left blank (white).

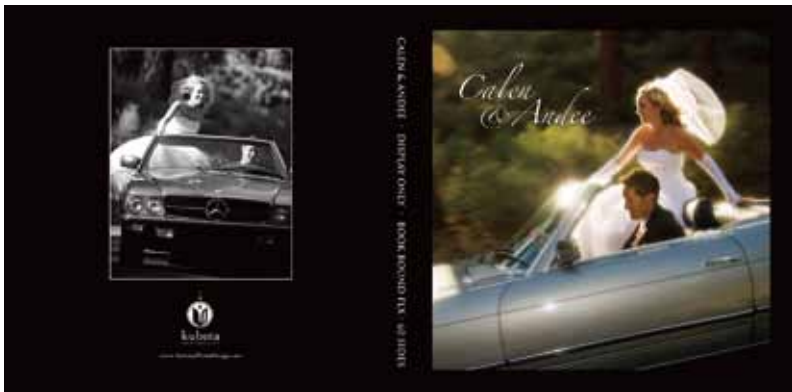


## UNDESIREABLE RESULTS

- 1 Book Bound LX/FLX presentation case will be printed exactly as cover file 000000.jpg.

All other covers will also be printed exactly as cover file 000000.jpg.

All Book Bound EX jackets will also be printed exactly as cover file 000000.jpg.



## CORRECT

- 1 Design cover (file 000000.psd).



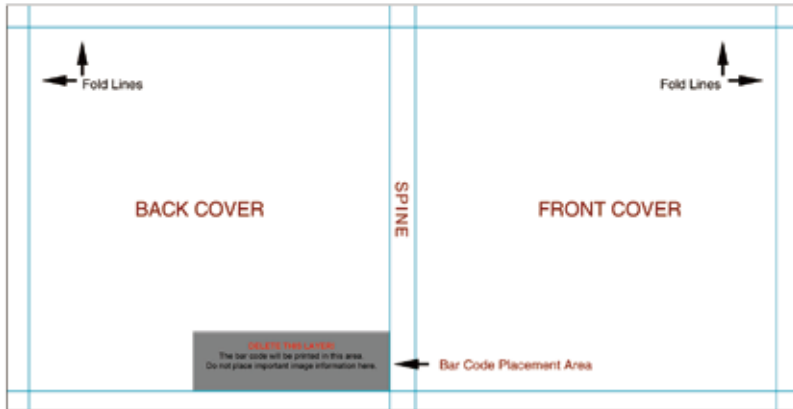
## DESIREABLE RESULTS

- 1 Book Bound LX/FLX presentation case designed.

All other covers will also be printed exactly as cover file 000000.jpg.

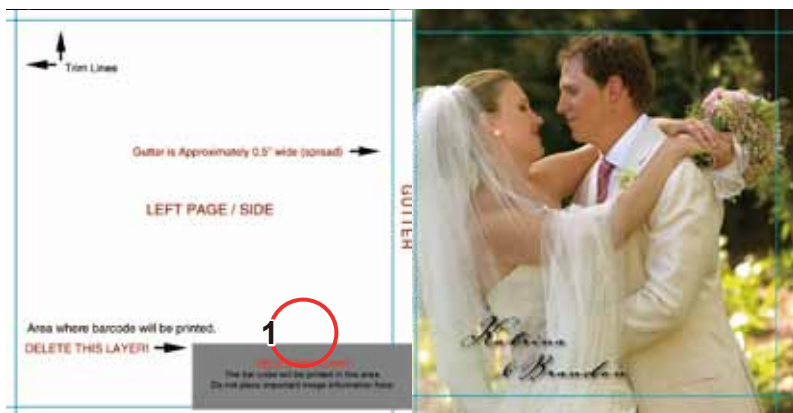
All Book Bound EX jackets will also be printed exactly as cover file 000000.jpg.

# BLANK TEMPLATE - BARCODE



## BLANK TEMPLATE - BARCODE

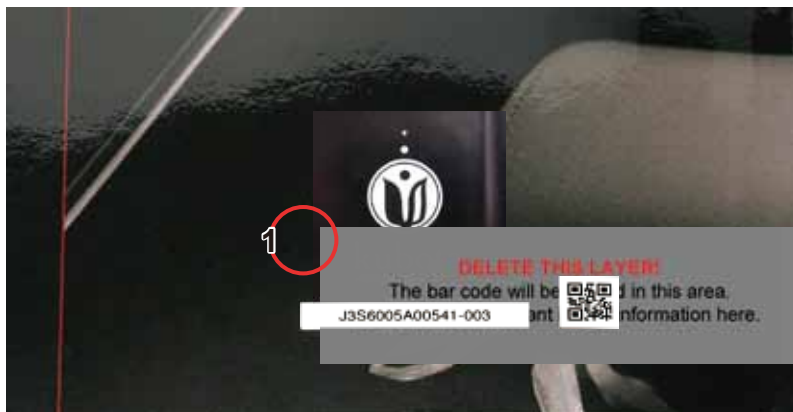
Barcode: Back Cover  
Last Inside Page



## INCORRECT PLACEMENT

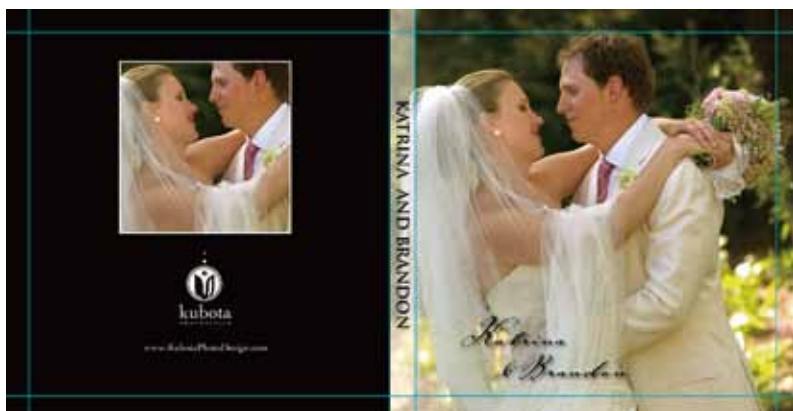
- 1 Barcode grey placement box not deleted.

Our system will automatically overprint barcode.



## UNDESIREABLE RESULTS

- 1 Barcode grey placement box not deleted.

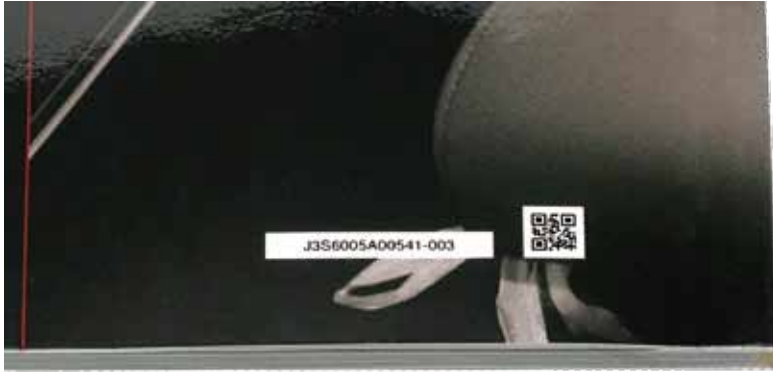


## CORRECT PLACEMENT

- 1 Deleted grey barcode placement box.

Our system will automatically overprint the barcode.

# BLANK TEMPLATE - BARCODE



## BARCODE PRINTING AREAS

Book Bound



## BARCODE PRINTING AREAS

Book Bound EX Jacket



## BARCODE PRINTING AREAS

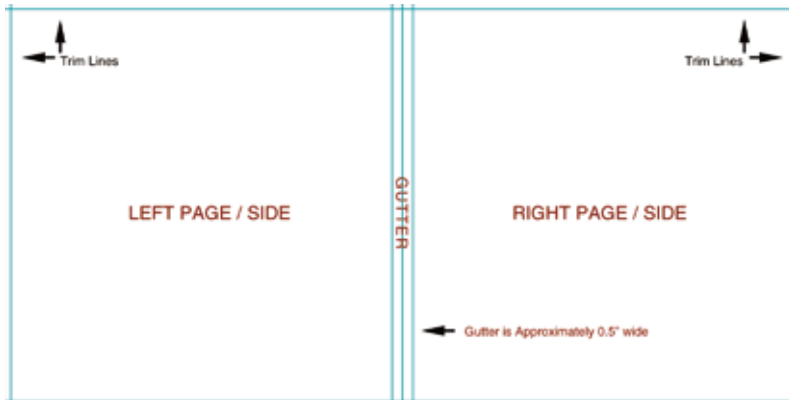
Book Bound LX/FLX Presentation Case



## BARCODE PRINTING AREAS

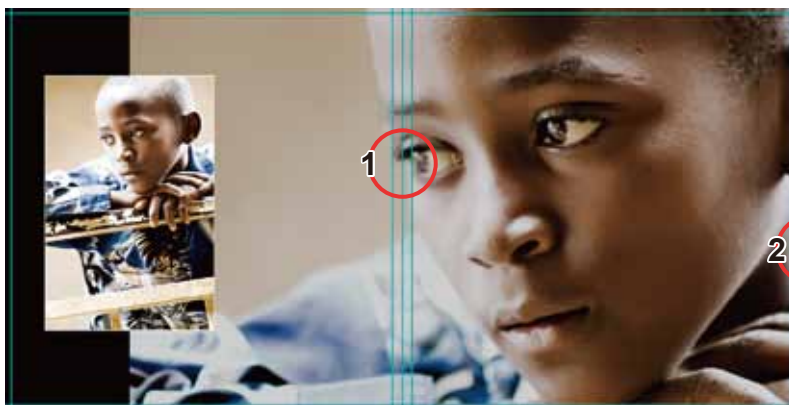
Last Inside Page

# BLANK TEMPLATE - INSIDE PAGES



## BLANK TEMPLATE - INSIDE PAGES

Resolution: 271 dpi  
Trim: Approximately .118 in  
Gutter: Approximately .50 in.



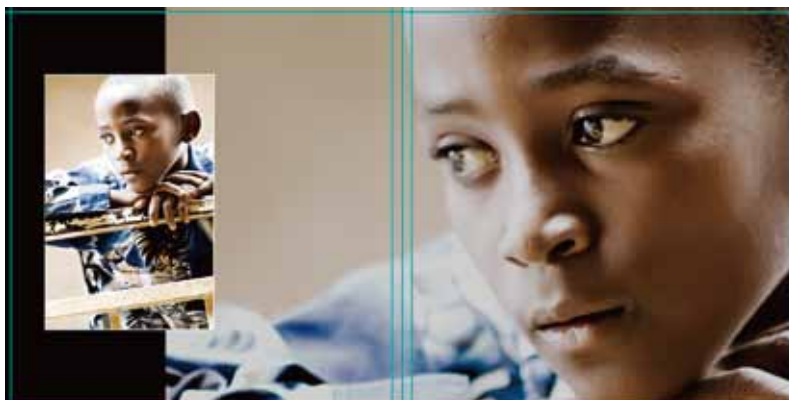
## INCORRECT PLACEMENT

- 1 Important part of image placed within gutter area.
- 2 Image edge stops at trim line.



## UNDESIREABLE RESULTS

- 1 Important part of image is lost in the gutter.
- 2 Possible paper shifting while trimming may leave/show part of background color.



## CORRECT PLACEMENT

- 1 Important part of image placed outside gutter area.
- 2 Image edge placed at the edge of the blank canvas or template (beyond trim line).